





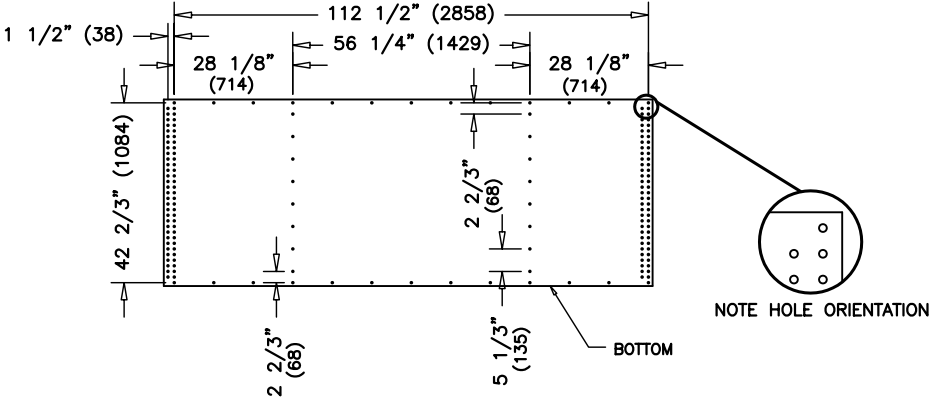


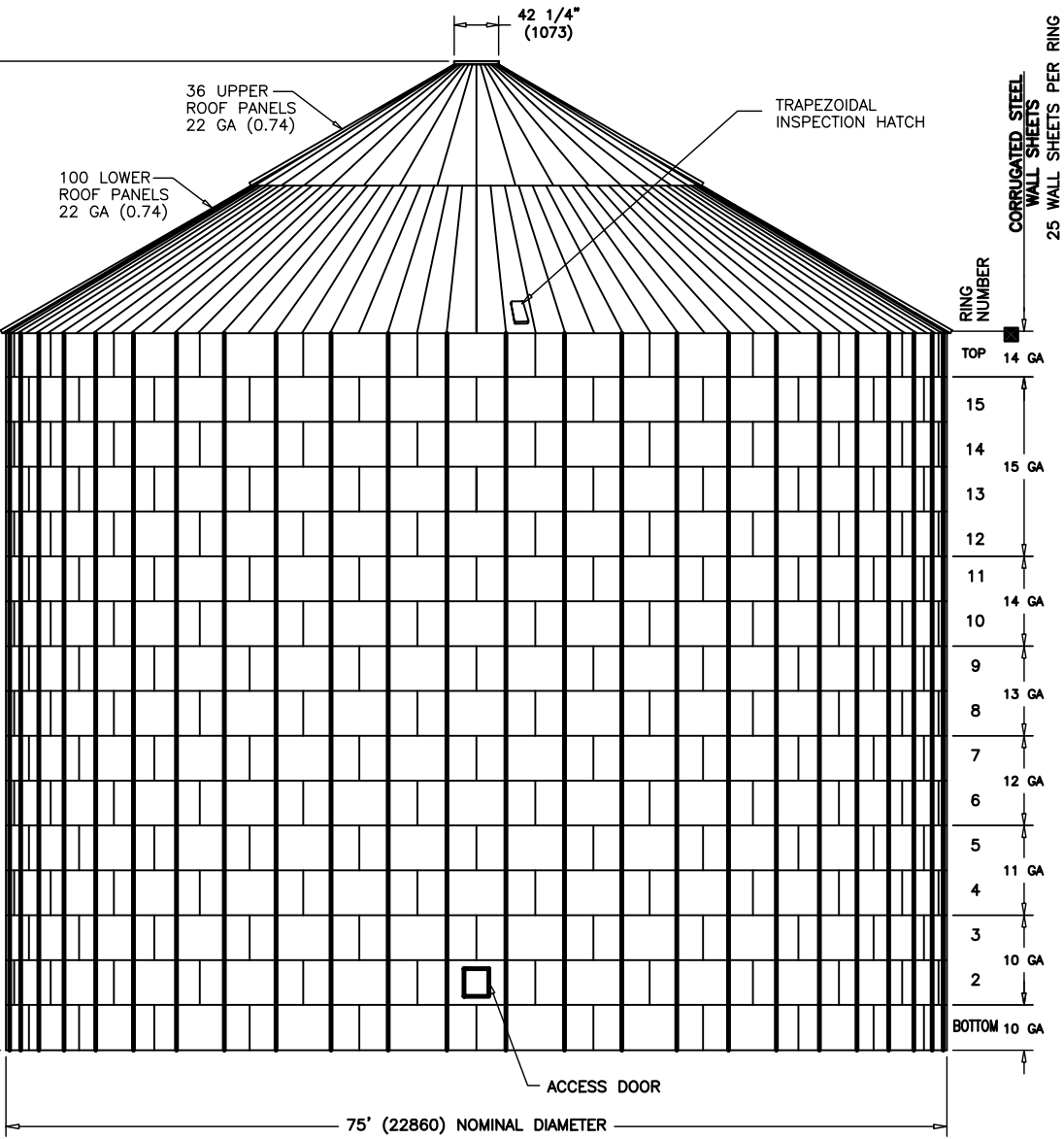
SAE GRADE 8 BOLTS	SAE GRADE 8.2 BOLTS
SAE GRADE 8 & SAE GRADE 8.2 BOLTS ARE ESSENTIALLY EQUAL FOR SILO ERECTION.	SAE GRADE 2 BOLTS
SAE GRADE 5 BOLTS	NOT ALLOWED ANYWHERE ON SCAFCO SILOS
ASTM A325 BOLTS	ASTM A307 BOLTS
USED FOR STRUCTURAL CONNECTIONS	ALLOWED ONLY FOR ANCHOR BOLTS
CONTACT SCAFCO ENGINEERING DEPARTMENT BEFORE SUBSTITUTING ANY BOLTS ON SILOS.	

PARTS	GAUGE	THICKNESS (mm)	COLOR CODE	PART NO. / REMARKS
SPUCE PLATES	14 GA	1.83	GREEN	214400
	12 GA	2.59	ORANGE	214192
	10 GA	3.30	BLACK	214124
	8 GA	3.76	BLUE	214130
	7 GA	4.55	GREEN	214194
	7H GA	4.55	GREEN	215691
STIFFENERS	14 GA	1.83	GREEN	214399
	12 GA	2.59	ORANGE	214122
	11H GA	2.95	YELLOW	
	10H GA	3.30	BLACK	
	10 GA	3.30	BLACK	214121
	8SH GA	3.76	BLUE	215852
	8H GA	3.76	BLUE	214901
	8 GA	3.76	BLUE	214120
	7SH GA	4.55	GREEN	215398
	7H GA	4.55	GREEN	215397
	7N GA	4.55	GREEN	215380
	7 GA	4.55	GREEN	214187
WALL SHEETS	3SH GA	5.80	UNPAINTED	
	20 GA	0.86	BLACK	
	19 GA	1.04	WHITE	
	18 GA	1.17	UNPAINTED	
	17 GA	1.32	RED	
	16 GA	1.47	BLUE	
	15 GA	1.63	YELLOW	
	14 GA	1.83	GREEN	
	13 GA	2.24	BROWN	
	12 GA	2.59	ORANGE	
	11 GA	2.95	YELLOW	
	10 GA	3.30	BLACK	
	8 GA	3.76	BLUE	
	(2)12GA	2 x 2.59	ORANGE	LAMINATED
	(2)11GA	2 x 2.95	YELLOW	LAMINATED
	(2)10GA	2 x 3.30	BLACK	LAMINATED
	(2)8GA	2 x 3.76	BLUE	LAMINATED
ROOF PANELS	24 GA	0.66	UNPAINTED	
	22 GA	0.74	YELLOW	
COLOR CODES ARE PAINTED ON BOTTOM OF WALL SHEETS, STIFFENERS & SPUCE PLATES.				

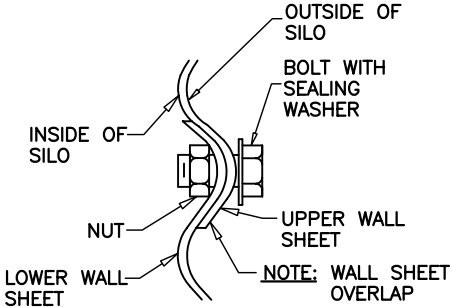
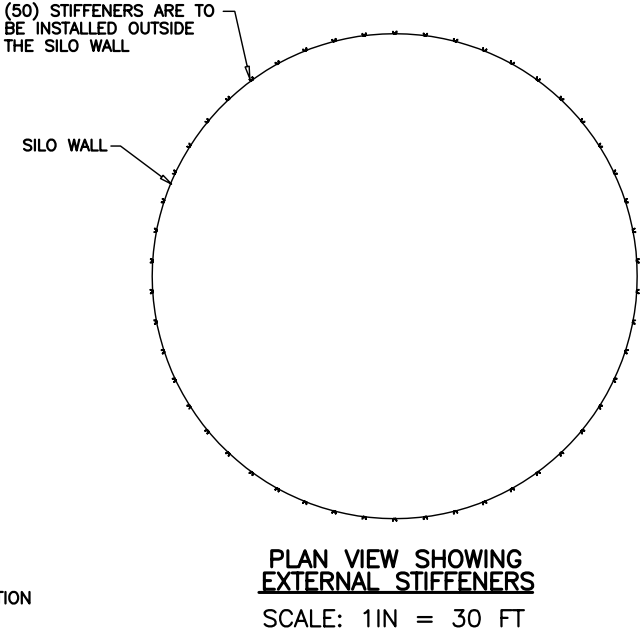
TYPICAL STIFFENER & SPUCE PLATE PROFILES					
					
SPUCE PLATE	HYBRID SPUCE PLATE	STIFFENER	STIFFENER	HYBRID STIFFENER	SUPER HYBRID STIFFENER
14 GA 12 GA 10 GA 8 GA 7 GA	7H GA	14 GA 12 GA 10 GA 8 GA 7N GA	7 GA	11H GA 10H GA 8H GA 7H GA	8SH GA 7SH GA 3SH GA



TYPICAL WALL SHEET
(EXTERNALLY STIFFENED)
VIEW FROM INSIDE THE BIN



MODEL 7557ES
CAPACITY: 277,663 CU. FT. (7862.5 CU. M.)
ANCHOR BOLTS = 1 3/8" X 24" (35 X 610) 50 REQ'D



HORIZONTAL SEAM

- NOTES:
- TOP WALL SHEETS ARE PUNCHED @ 3 1/8" (79 mm) O.C. AT THE TOP OF THE SHEET AND @ 9 3/8" (238 mm) O.C. AT THE BOTTOM.
 - UPPER WALL SHEET RING ALWAYS OVERLAPS THE WALL SHEET RING BELOW IT. NO FIELD-DRILLING IS NECESSARY TO MATCH HOLES.
 - BOTTOM RING OF WALL SHEETS HAS INWARD FLANGE.
 - * INDICATES SPUCE PLATE (SEE CHART FOR PART NO.).
 - TO PREVENT STRIPPING OFF THE SEALING WASHER FROM THE BOLT HEAD. ALWAYS DRIVE THE NUT (INSTEAD OF THE BOLT) TO FASTEN CONNECTIONS.**
- WALLSHEET-TO-WALLSHEET CONNECTION**
- HORIZONTAL SEAMS – USE 3/8" x 1" (10 mm x 25 mm) GR. 8.2 BOLTS (290103).
 - HORIZONTAL SEAMS – ALL BOLT SPACING IS @ 9 3/8" (238 mm) O.C., EXCEPT THOSE MARKED ■, BOLT SPACING IS @ 3 1/8" (79 mm) O.C.
 - VERTICAL SEAMS – USE 3/8" x 1" (10 mm x 25 mm) GR. 8.2 BOLTS (290103). EXCEPT THOSE MARKED ◆, USE 7/16" x 1 1/4" (11 mm x 32 mm) GR. 8.2 BOLTS (290101).
- STIFFENER WEB-TO-WALLSHEET CONNECTION**
- USE 3/8" x 1" (10 mm x 25 mm) GR. 8.2 BOLTS (290103), EXCEPT THOSE MARKED ▲, USE 3/8" x 1 1/4" (10 mm x 32 mm) GR. 8.2 BOLTS (290389). OR THOSE MARKED ○, USE 3/8" x 1 1/2" (10 mm x 38 mm) GR. 8.2 BOLTS (290160).
- STIFFENER WEB-TO-WALLSHEET HORIZONTAL SEAM CONNECTION**
- USE 3/8" X 1 1/4" (10 mm x 32 mm) GR 8.2 BOLTS (290389). EXCEPT WHERE LAMINATED STIFFENERS ARE LOCATED, USE 3/8" X 1 1/2" (10 mm x 38 mm) GR 8.2 BOLTS (290160)
- SPUCE PLATE WEB-TO-STIFFENER WEB-TO-WALLSHEET CONNECTION**
- USE 3/8" x 1" (10 mm x 25 mm) GR. 8.2 BOLTS (290103), EXCEPT THOSE MARKED ▲, USE 3/8" x 1 1/4" (10 mm x 32 mm) GR. 8.2 BOLTS (290389).
- SPUCE PLATE FLANGE-TO-STIFFENER FLANGE CONNECTION**
- USE 3/8" x 1" (10 mm x 25 mm) GR. 8.2 BOLTS (290103).

APPROVED

CHECKED

DRAWN

BY

EPR

DATE

07AUG02

DRAWING NO.:

7557ES

SCALE: 1 IN = 15 FT

SHEET: 1 OF 1

MODEL 7557ES

SILO SPECIFICATIONS

SCAFECO®

Grain Systems Company

6200 E. Main Avenue

P.O. Box 11215

Spokane, WA 99211-1215, USA

Tel: 509-535-1571 * Fax: 509-535-9130 * mail@scfco.com * www.scfco.com